

# Weintek Built-in CODESYS

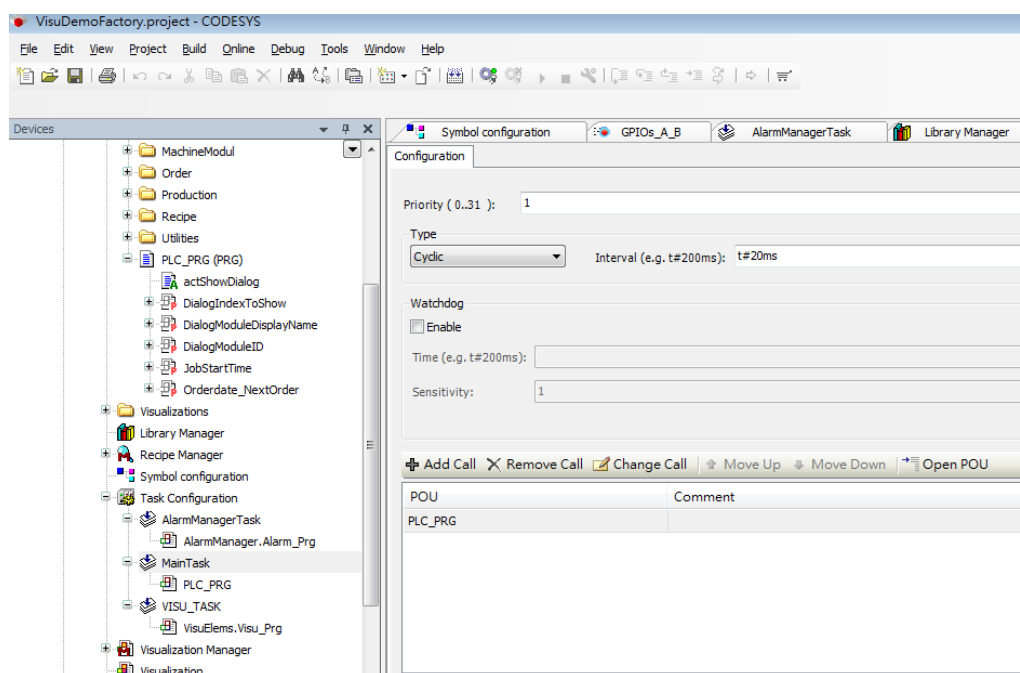
Supported series: Weintek Built-in CODESYS HMI

## HMI Setting:

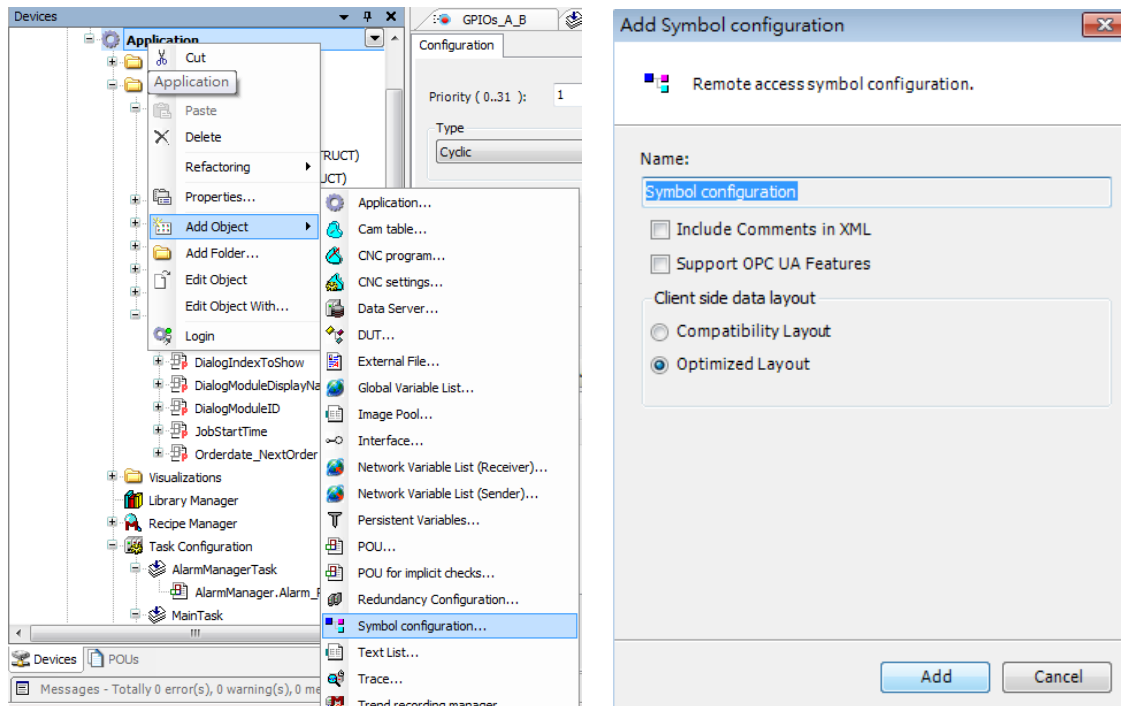
Parameters	Recommended	Options	Notes
PLC type	Weintek Built-in CODESYS		
PLC I/F	Ethernet		

## How to Import Tags:

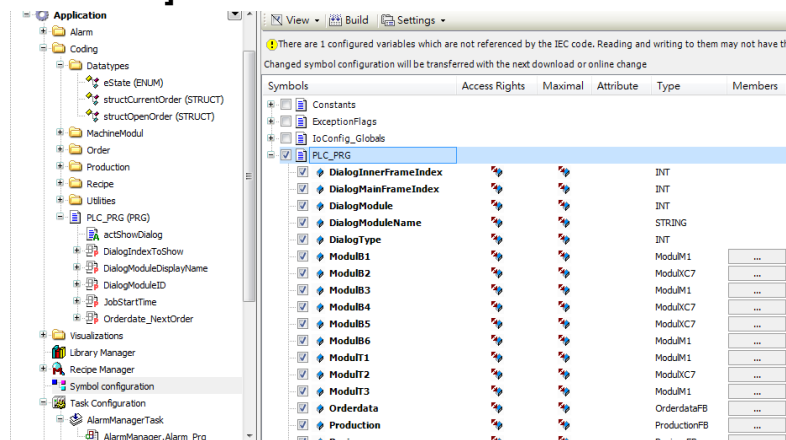
1. Under “MainTask” set POU PLC\_PRG.



## 2. Add "Symbol configuration" into Devices list.



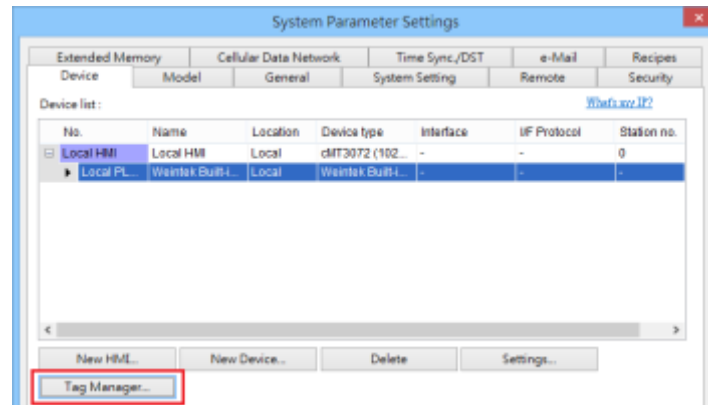
## 3. Select PLC\_RPG and its tag information is shown, build the project. [build] -> [Generate Code]



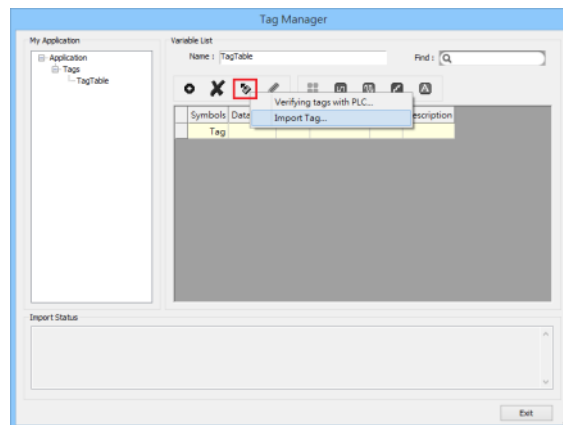
## 4. A \*.xml file is generated in the directory of the project.

VisuDemoFactory.Device.Application.77b33013-b5cd-4...	2016/4/29 11:36	BOOTINFO 檔案	43,347 KB
VisuDemoFactory.Device.Application.77b33013-b5cd-4...	2016/4/29 11:36	BOOTINFO_GUL...	1 KB
VisuDemoFactory.Device.Application.77b33013-b5cd-4...	2016/4/29 11:36	COMPILEINFO 檔...	43,347 KB
VisuDemoFactory.Device.Application.xml	2016/4/29 11:36	XML Document	29 KB
VisuDemoFactory.project	2016/4/29 19:26	CODESYS project	1,362 KB
VisuDemoFactory.project.~u	2016/5/4 11:17	~U 檔案	1 KB
VisuDemoFactory-admin-Weintek-RD-APP1.opt	2016/4/29 19:26	OPT 檔案	81 KB
VisuDemoFactory-AllUsers.opt	2016/4/29 19:26	OPT 檔案	1 KB

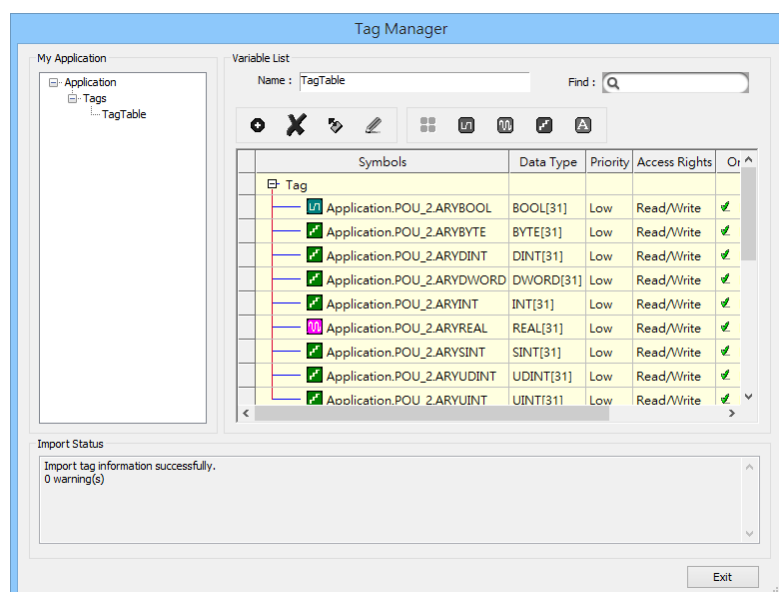
5. In System Parameter Settings click **[New]** to add Weintek Built-in CODESYS driver into the device list and then click **[Tag Manager]**.



6. In Tag Manager click **Get tag -> Import Tag**, and then select the tag file (.xml) generated by the PLC software.



7. When the tags are imported successfully, click **[Exit]** to leave.



## Support Device Type:

Data type	EasyBuilder data format	Memo
Bool	bit	
Byte	16-bit BCD, Hex, Binary, Unsigned	8-bit
SInt	16-bit BCD, Hex, Binary, Signed	8-bit
USInt	16-bit BCD, Hex, Binary, Unsigned	8-bit
Word	16-bit BCD, Hex, Binary, Unsigned	16-bit
Int	16-bit BCD, Hex, Binary, Signed	16-bit
UInt	16-bit BCD, Hex, Binary, Unsigned	16-bit
DWord	32-bit BCD, Hex, Binary, Unsigned	32-bit
DInt	32-bit BCD, Hex, Binary, Signed	32-bit
Real	32-bit Float	32-bit
UDInt	32-bit BCD, Hex, Binary, Unsigned	32-bit
LInt	64-bit Signed	64-bit
ULInt	64-bit Unsigned	64-bit
LWord	64-bit Unsigned	64-bit
LReal	64-bit Float	64-bit
String	Word array for ASCII input and display	Length=word

**Note1:** String length must be set identical to the length in Codesys software.

**Note2:** EBPro V6.03.02 or later supports 64 bits data type (**cMT Series only**), but please note that the address limit range is 48 bits in maximum.

## Wiring Diagram:

### Diagram 1

Ethernet cable:

